

# Simply brilliant



## One-touch gel imaging

## iGlow Gel Documentation System for Protein and Nucleic Acid Gels

Experience stunning clarity and ease with the Invitrogen™ iGlow™ Gel Documentation System. Designed for simplicity and efficiency, this system enables gel imaging with a single touch. Its intuitive touchscreen interface makes capturing, visualizing, and saving high-quality, publication-ready protein and nucleic acid gel images quick and easy. Beginner friendly, user-installable, and compatible with various gel sizes, this system keeps your workflow clean and connected.

invitrogen

# iGlow Gel Documentation System— one-touch gel imaging that's simply brilliant

## Benefits

- **Simple**—capture high-quality gel images with one touch.
- **Flexible**—compatible with protein and nucleic acid gels, and various gel sizes including Invitrogen™ E-Gel™ DNA gels and Invitrogen™ precast mini and midi protein gels, and pour-your-own (PYO) gels.
- **Accessible**—beginner friendly and user installable, suitable for everyday gel imaging needs in individual labs.

## Why choose the iGlow system?

- Fast and reliable imaging for labs that run gels frequently—without added complexity.
- Open system compatible with a wide range of stains and handcast nucleic acid and protein gels.
- Safe blue-light imaging to protect samples and users while reducing UV exposure.
- A dedicated gel imager that frees up multi-application instruments, reduces contamination risk, and keeps workflows moving.
- Auto-recognized trays to simplify setup and help minimize user error.

## Features

### With the iGlow Gel Documentation System you can:

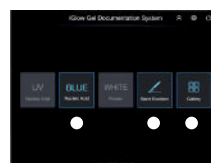
- Take advantage of automated tray recognition to quickly and easily activate the desired light source.
- Access three integrated light sources within a single compact device for versatile gel documentation workflows.
- Perform on-board image editing, allowing you to make immediate adjustments after image capture and quickly export or print for documentation.
- Conduct safe gel excision using blue LED illumination, providing an effective and non-UV alternative for sample handling.
- Mitigate bulb replacements, enabling consistent, reliable light output using all-LED illumination.
- Transfer data with ease using USB or Wi-Fi connectivity.
- Utilize the included Invitrogen™ iBright™ Analysis Software for image analysis and data management.



UV tray activated



BLUE tray activated



WHITE tray activated

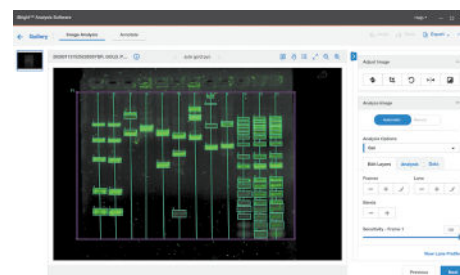


The iGlow system recognizes the tray and only activates the corresponding functions.

The iGlow system includes on-board image editing tools.



Users can analyze images using iBright Analysis Software (included in the instrument purchase) and export data to generate reports.



# iGlow system stains and dyes compatibility chart

Application	Gel stain	Excitation source		
		UV	Blue*	White
Protein	Invitrogen™ Coomassie Fluor™ Orange		X	
	BioRad™ Flamingo™ Stain		X	
	BioRad™ Oriole™ Stain	X		
	Thermo Scientific™ Pierce™ Silver Stain			X
	Invitrogen™ Pro-Q™ Diamond Phosphoprotein		X	
	Invitrogen™ SimplyBlue™ SafeStain			X
	Invitrogen™ SYPRO™ Ruby	X		
	Invitrogen™ SYPRO™ Orange	X		
	Invitrogen™ SYPRO™ Red	X		
	Invitrogen™ SYPRO™ Tangerine	X		
DNA	Millipore-Sigma™ GelRed™ stain	X		
	Gold-Bio™ GelGreen™ stain		X	
	Bulldog Bio™ Midori Green		X	
	Invitrogen™ SYBR™ Gold		X	
	Invitrogen™ SYBR™ Green		X	
	Invitrogen™ SYBR™ Safe		X	
	Invitrogen™ UltraPure™ Ethidium Bromide	X		

\* Most blue-light excitable dyes can also be visualized under UV illumination, and many UV-excitable dyes are compatible with blue-light imaging, though signal intensity may vary.

## Order information

Every iGlow Gel Documentation System includes one instrument, one of each tray (UV, blue and white), one UV shield, unlimited-use software license, and 2-yr standard warranty from the date of purchase.

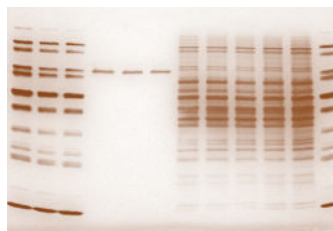
Name	Cat. No
iGlow Gel Documentation System, 110V	IGLOW
iGlow Gel Documentation System, 220V	IGLOW220
Thermal Printer	A45235
USB Wi-Fi Module	A26774

Learn more at [thermofisher.com/iglow](http://thermofisher.com/iglow)

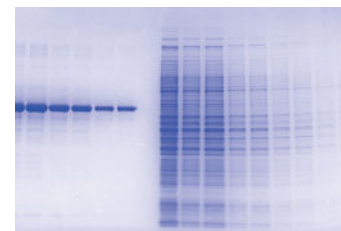
Protein and nucleic acid gel images captured using different excitation light sources on the iGlow Gel Documentation System.

All images were processed and saved using iBright™ Analysis Software.

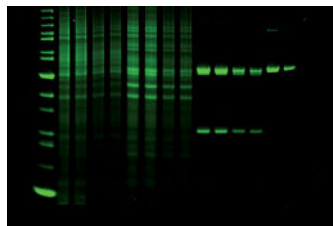
## Protein gel images



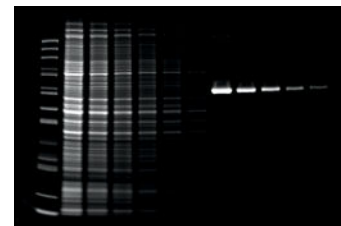
Stain used: Pierce Silver Stain (Cat. No. [24612](#))  
Light source: white



Stain used: SimplyBlue SafeStain (Cat. No. [LC6065](#))  
Light source: white

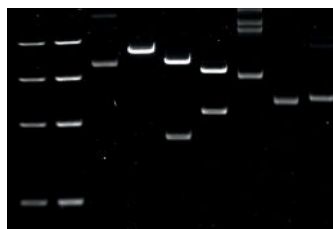


Stain used: SYPRO Red Protein Gel Stain (Cat. No. [S6653](#))  
Light source: UV

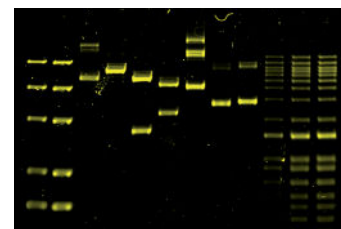


Stain used: Coomassie Fluor Orange (Cat. No. [C33250](#))  
Light source: blue

## Nucleic acid gel images



Stain used: UltraPure Ethidium Bromide (Cat. No. [15585011](#))  
Light source: UV



Stain used: SYBR Gold Nucleic Acid Gel Stain (Cat. No. [S11494](#))  
Light source: blue

## Recommended gel imaging essentials for the iGlow system

### Nucleic acid gel workflows—your way

The iGlow Gel Documentation System supports both agarose gels prepared in-house (PYO) and E-Gel precast formats.

### Pour-your-own (PYO) agarose gels

For labs that prefer preparing agarose gels in-house, Thermo Fisher Scientific offers reagents designed to streamline each step of the electrophoresis process—from gel preparation to visualization and documentation.

Product	Size	Cat. No.
UltraPure Agarose	100g	<a href="#">16500100</a>
UltraPure TBE Buffer, 10X	1 L	<a href="#">16500500</a>
GeneRuler 1 kb Plus DNA Ladder	5 × 50 µg	<a href="#">15581044</a>
SYBR Safe DNA Gel Stain	400 µL	<a href="#">S33102</a>



Learn more at [thermofisher.com/ultrapure](https://thermofisher.com/ultrapure)

### Invitrogen™ E-Gel™ Power Snap Systems

**All-in-one electrophoresis.** E-Gel Power Snap systems streamline nucleic acid electrophoresis with an integrated workflow, while the iGlow™ system enables flexible, standalone imaging across nucleic acid and protein gel applications.

Product	Cat. No.
E-Gel Power Snap Plus Electrophoresis Device	<a href="#">G9101</a>
E-Gel Power Snap Plus Electrophoresis System	<a href="#">G9301</a>
E-Gel EX Agarose Gels	<a href="#">G401001</a>
E-Gel 48-well Agarose Gels	<a href="#">G820802</a>
E-Gel 96-well Agarose Gels	<a href="#">G720802</a>
E-Gel CloneWell II Agarose Gels	<a href="#">G661818</a>



Learn more at [thermofisher.com/egelselection](https://thermofisher.com/egelselection)

### Protein gel electrophoresis workflows

A curated selection of Invitrogen™ and Thermo Scientific™ gels, stains, buffers, and ladders that supports efficient workflows and high-quality protein gel imaging when used with the iGlow system. Learn more at [thermofisher.com/protein-electrophoresis](https://thermofisher.com/protein-electrophoresis)



Mini gel welcome packs	Cat. No.
Bolt Bis-Tris Welcome Pack, 4-12%, 12-well, 1 Welcome Pk. kit	<a href="#">NW0412C</a>
NuPAGE Bis-Tris Welcome Pack, 4 to 12%, 12-well, 1 Welcome Pk. kit	<a href="#">NP032B</a>
Novex WedgeWell Tris-Glycine Welcome Pack, 4 to 20%, 12-well, 1 Welcome Pk. kit	<a href="#">XP0420B</a>
NuPAGE WedgeWell Tris-Acetate Welcome Pack, 3 to 8%, 12-well, 1 Welcome Pk. kit	<a href="#">TA03812B</a>
Novex Tricine Welcome Pack, 10-20%, 12-well, 1 Welcome Pk. kit	<a href="#">EC6625B</a>
Midi gel welcome packs	Cat. No.
NuPAGE WedgeWell Midi Bis-Tris Welcome Pack, 4 to 12%, 20-well, 1 Welcome Pk.	<a href="#">STM5002</a>
Novex WedgeWell Midi Tris-Glycine Plus Welcome Pack, 4 to 20%, 20-well, 1 Welcome Pk.	<a href="#">STM5008</a>
NuPAGE WedgeWell Midi Tris-Acetate Welcome Pack, 3 to 8%, 20-well, 1 Welcome Pk.	<a href="#">STM5006</a>
Handcast gels	Cat. No.
SureCast Gel Handcast Bundle A - Hardware and Reagents	<a href="#">HC1000SR</a>

Learn more at [thermofisher.com/iglow](https://thermofisher.com/iglow)

**invitrogen**